

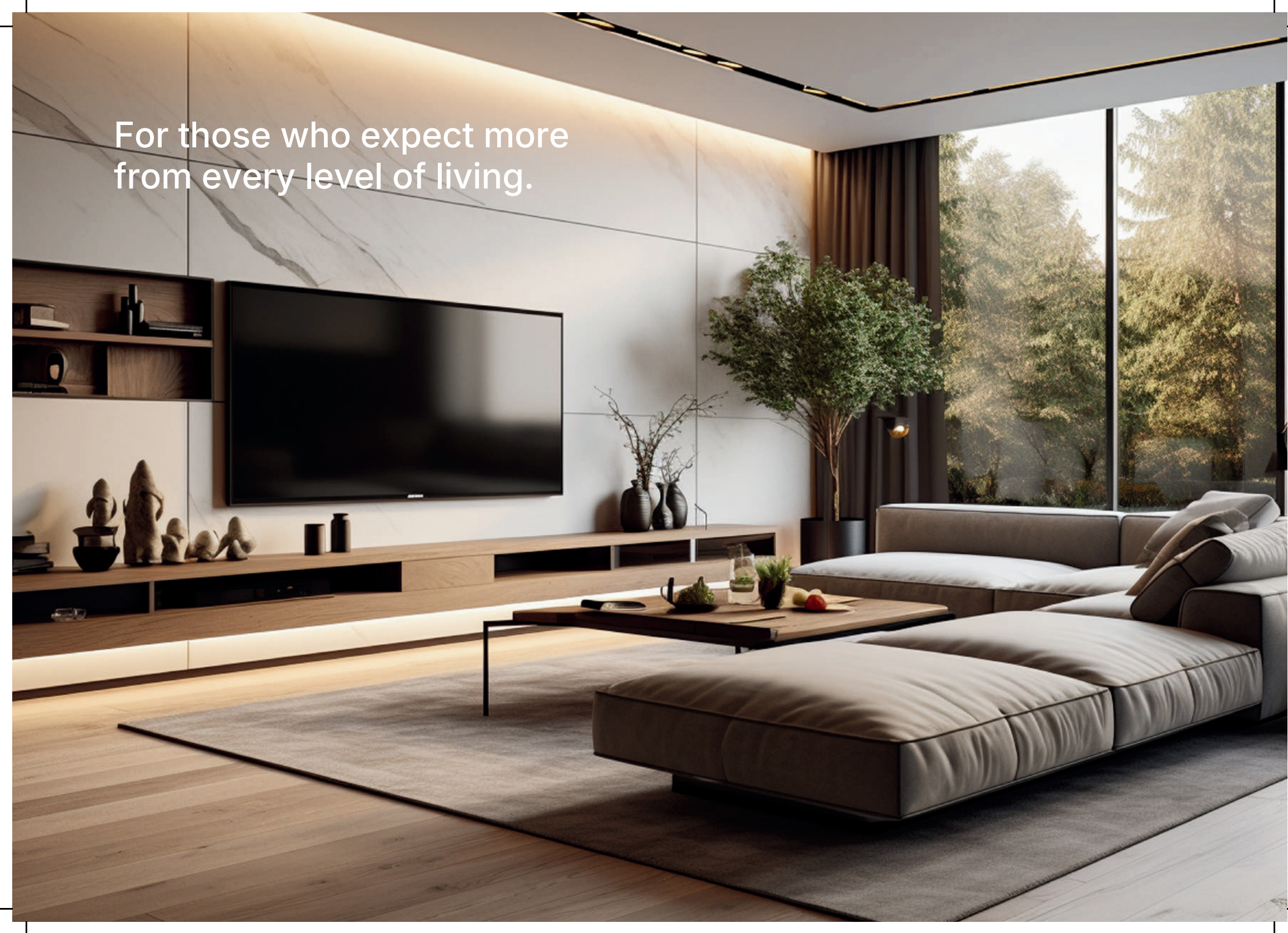


KONE

# KONE Villa100

Compact machine roomless elevator for your home

For those who expect more  
from every level of living.



# Elevate your living experience

At KONE, we believe movement should feel effortless and life at home, even more so.

Introducing KONE Villa 100 Elevator. Designed to integrate seamlessly into your interiors, crafted with precision engineering, and built with safety and sustainability at its core.

It moves quietly in the background, yet transforms the way you experience movement in your home. Creating smoother flow, greater comfort and a home that adapts to every stage of life.

Because when movement works beautifully, living does too.



# Designed around you

## **SAFETY, BUILT INTO EVERY JOURNEY**

Designed with safety at its core, to give you complete peace of mind. In the event of a power interruption, the automatic rescue device ensures a safe return to the nearest floor. With a one-touch alarm system, assistance is always within reach.

## **EFFICIENCY, DESIGNED IN**

Powered by a standard single-phase 220V supply, the elevator integrates effortlessly into your home without complex electrical requirements. With daily energy consumption lower than that of a refrigerator, it delivers performance that is efficient and reliable.

## **WHISPER-QUIET, EFFORTLESSLY SMOOTH**

Powered by a permanent magnet synchronous gearless traction machine, KONE Villa Elevator delivers quiet performance creating a calm home environment. Advanced vector control technology adjusts speed in real time, making every ride comfortably intuitive.

## **INTELLIGENT SPACE, MAXIMUM FREEDOM**

Machine room-less design, low overhead solution requires only 2900 mm overhead and 200 mm pit depth. By reducing structural demands, it enhances building efficiency and opens up greater design possibilities.



# Safety considered in every detail



## AUTOMATIC RESCUE DEVICE

In the event of a power outage, the rechargeable battery supplies power to the elevator, enabling it to travel to the nearest landing and release the passenger safely.



## RIDE COMFORT

Superior double shock pads help absorb impact and reduce vibration during elevator operation.



## SOLID GUIDE RAILS

Solid guide rails ensure exceptional stability and minimal vibration. They also form a critical part of the safety system, providing secure guidance and reliable braking support.



## EMERGENCY CALL

An integrated communication system connects the Lobby, Maintenance Access Panel (MAP), Car Roof, Car, and Pit, ensuring seamless coordination at all times.



## SILENT CABIN

Cabin noise levels are maintained at just 47 dB, creating a calm, whisper-quiet environment for every journey.



## ENERGY EFFICIENCY

Energy efficient LED lightings, emergency lighting in the car in case of power.



## One-touch Call Alarm

With the One-Touch Call Alarm, assistance is always within reach; instantly connecting you to family member, friends, or your property manager whenever needed.

Because reassurance should be as effortless as the ride itself.

LTE-FDD B1/B3/B5/B7/B8/B20  
GSM/GPRS/EDGE 900/1800 MHz

# Space that reflects your personal style

The transparent glass shaft invites natural light, enhances spatial openness, and transforms the elevator into a striking architectural feature — while the intelligently engineered design ensures fast, hassle-free installation.

## Ceiling



G1025053  
Aluminum alloy frame + acrylic plate



G1025058  
Aluminum alloy frame + surrounding light strips + middle white aluminum plate and ring light

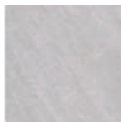


G1025060  
Aluminum alloy frame + middle black aluminum plate and fiber optic light

## Floor



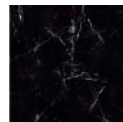
51950073  
PVC



51950074  
PVC



51781628  
Grey artificial marble



51781629  
Black artificial marble



Phantom Black



Pearl White



Champagne



- Transparent laminated tempered glass
- Grey color laminated tempered glass

Select from a curated range of interior finishes that complement your home interiors.

**Wall\***



Stainless steel



Gilded moment



Wooden style

\*For more wall finishes, please contact our sales representative

**Door\***



ST4  
Hairline stainless steel



Phantom Black  
Black satin-sprayed steel



Golden  
Gold sand-blasted steel

\* Note: Car door and landing door should be of the same color. Glass door options also available.

PVC

**Ceiling**



G1025052  
Silver hairline stainless steel 304  
+ LED linear white light



G1025053  
Aluminum alloy frame +  
acrylic plate



G1025054  
Silver hairline stainless steel 304  
+ LED downlight



G1025057  
Mirror stainless steel +  
LED downlight

**Handrail**



G1026013  
Black titanium  
hairline stainless  
steel square tube



G1026012  
Champagne gold  
hairline stainless  
steel square tube



G1026007  
Walnut wooden  
steel pipe and  
silver hairline  
stainless steel tube



G32102  
Silver hairline  
stainless steel tube

**Floor**



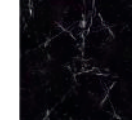
51950073  
PVC



51950074  
PVC



51781628  
Grey artificial marble



51781629  
Black artificial marble

# Signalization

## 016 model



Stainless steel COP

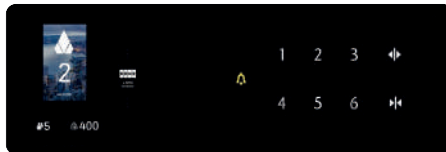
Glass COP



Wall mounted landing call

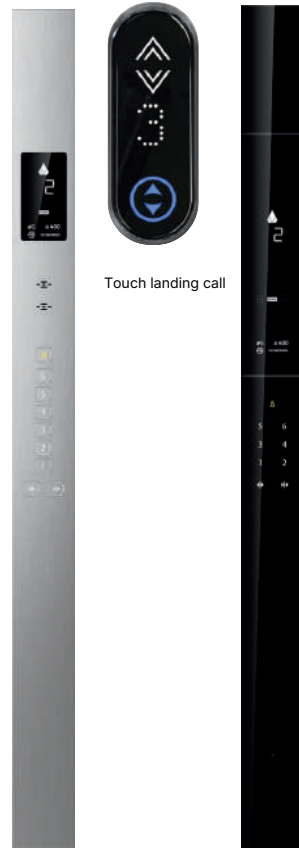
Flushed landing call

Glass landing call



Glass horizontal COP with LCD

## Scenic car



Touch landing call

Full height swing COP

Full height

# Technical specifications

| Range Table (KONE Villa 100) |                              |
|------------------------------|------------------------------|
| Speed (m/s)                  | 0.3 (m/s)                    |
| No of Passengers             | 3, 4                         |
| Travel (m)                   | 12 m                         |
| Pit (mm)                     | 200 mm                       |
| Headroom (mm)                | 2900 mm min required.        |
| Car height [CH] (mm)         | 2100-2300 (50mm incremental) |
| Door Opening [LL]* (mm)      | 700-900 (50mm incremental)   |

\* Side Opening and center opening available

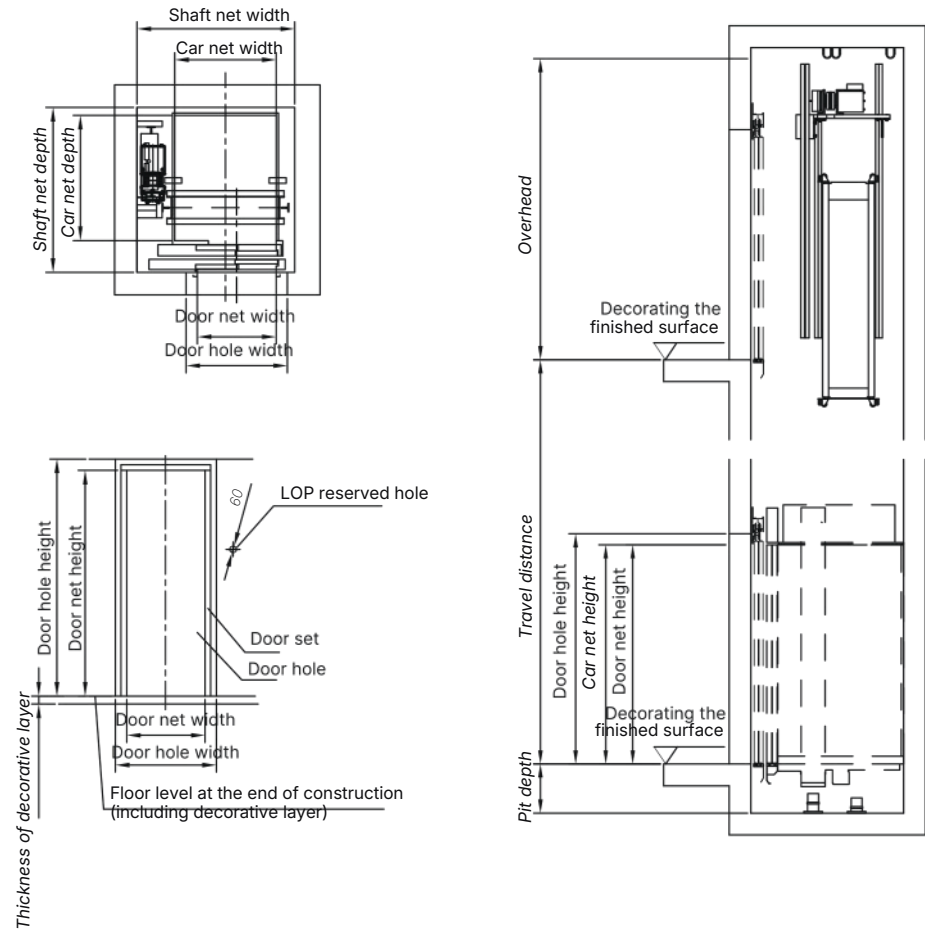
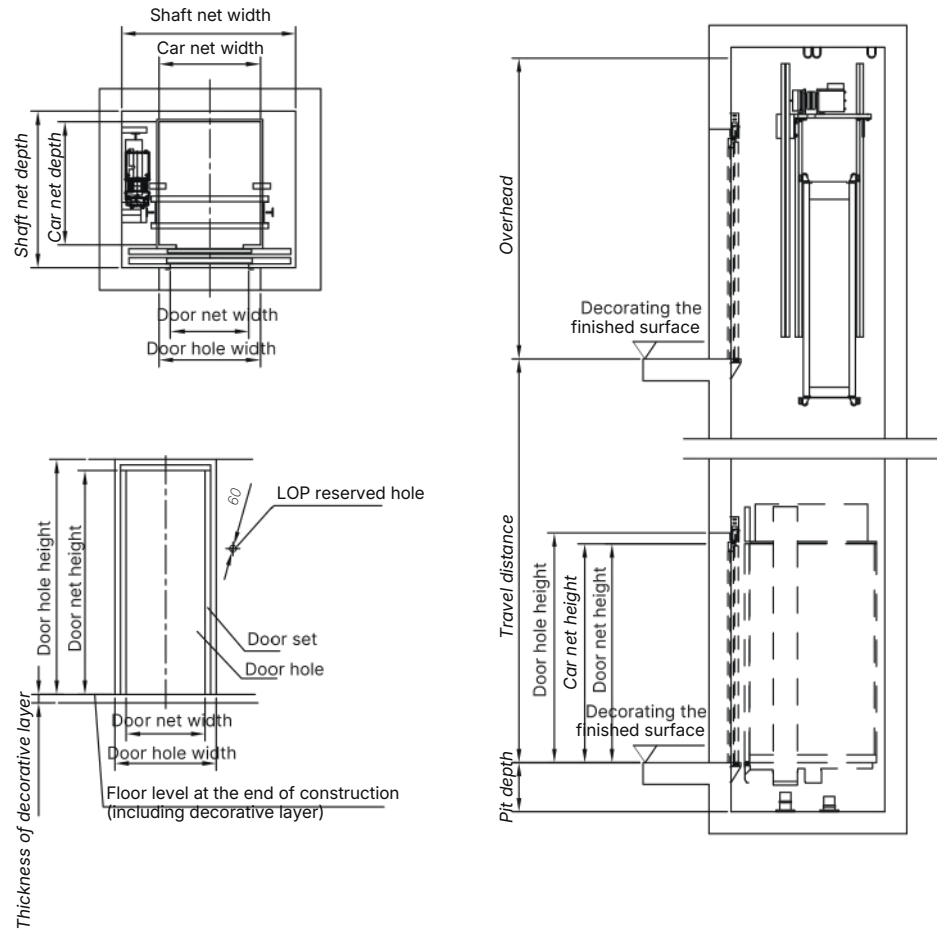
Note: Please consult our sales representatives. Different ceiling may influence headroom. All dimension are in mm unless otherwise stated. All information is for project planning purpose only. Subject to change without notice.

| RCC Shaft   | COPD |      | TSPD |      |
|-------------|------|------|------|------|
|             | WW   | WD   | WW   | WD   |
| 3 Passenger | 1500 | 1200 | 1360 | 1290 |
| 4 Passenger | 1500 | 1250 | 1360 | 1315 |

| Aluminium Shaft | COPD |      | TSPD |      |
|-----------------|------|------|------|------|
|                 | WW   | WD   | WW   | WD   |
| 3 Passenger     | 1590 | 1330 | 1440 | 1390 |
| 4 Passenger     | 1590 | 1355 | 1440 | 1415 |

Note: The designs featured in the brochure are subject to availability. Kindly contact your sales representative for further information.

# Construction sketch



Two panels, Central opening

Two panels, Side opening

\*This product is as per KONE Global standards"

# Reliability that offers complete peace of mind

Crafted with precision components and designed for long-term performance, the system delivers consistent, dependable operation throughout every stage of life at home.

Supported by KONE service expertise and care, it ensures minimal disruption and complete confidence — today and for years ahead.

Because true peace of mind comes from knowing everything works exactly as it should.







KONE provides innovative and eco-efficient solutions for elevators, escalators, and the systems that integrate them with today's intelligent buildings. We support our customers every step of the way: from design, manufacturing and installation to maintenance and modernisation. KONE is a global leader in managing smooth flow of people and goods throughout buildings. This makes us a reliable partner throughout the lifecycle of buildings. We are fast, flexible, and have a well-deserved reputation as a technology leader, with innovations as Regenerative drives, KONE 24/7 Connected Services and KONE UltraRope®. KONE employs over 60,000 dedicated experts to serve you globally and locally.

This publication is for general informational purposes only and we reserve the right at any time to alter the product design and specifications. No statement this publication contains shall be construed as a warranty or condition, express or implied, as to any product, its fitness for any particular purpose, merchantability, quality or representation of the terms of any purchase agreement. Minor differences between printed and actual colors may exist. KONE MonoSpace® DX, KONE EcoDisc® and People Flow® are registered trademarks of KONE Corporation.  
Copyright © 2024 KONE Corporation. [www.kone.com](http://www.kone.com)